

Buro Seating Fabric Range



PYRAMID



51 Navy



52 Charcoal



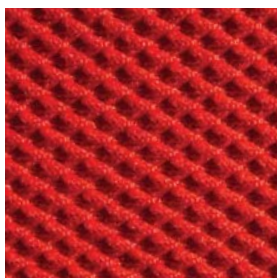
53 Black



54 Green



55 Burgundy



56 Red

ZAR

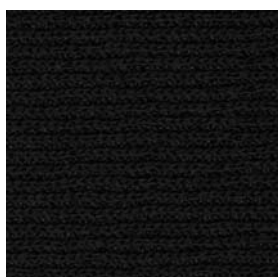


1 Blue



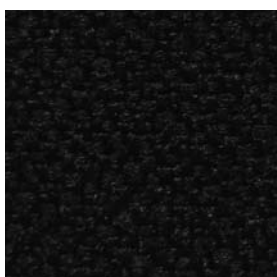
3 Black

ZEN



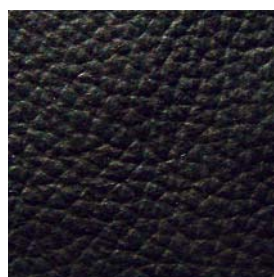
103 Black

ICON



23 Black

LEATHER



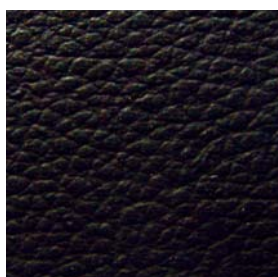
L3 Black

BONDED LEATHER



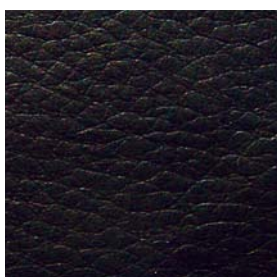
BL3 Black

VINYL



V3 Black

PU



PU3 Black

AIR MESH



AM3 Black

SEE OVER FOR
TECHNICAL
SPECIFICATIONS

Buro Seating Fabric Range

TECHNICAL SPECIFICATIONS



	FABRIC CONTENT	WIDTH	TENSILE STRENGTH	ABRASION RESISTANCE	FLAME RESISTANCE	COLOUR FASTNESS
PYRAMID	100% Recycled Polyester	152cm	—	Martindale 50,000 plus rubs	California 117, Section E Class 1	Wet - Class 4.5 Dry - Class 4.5 @ 40 hours
ZAR	100% Polyester	152cm	—	Wyzenbeek 70,000 double rubs	California 117, Section E Class 1	Wet - Class 4 Dry - Class 4
ZEN	100% Polyester	145cm	—	Martindale Exceeds 50,000 rubs	California 117, Section E Class 1	Wet - Class 4 Dry - Class 4
ICON	100% Polyester	152cm	—	Wyzenbeek 150,000 double rubs	California 117, Section E Class 1	Wet - Class 4 Dry - Class 4
LEATHER	Top Grain Quality Hide 100% Cow Leather	—	—	50,000 rubs	California 117 BS 5852 Part 1: 1979	Wet - Class 4 Dry - Class 4
BONDED LEATHER	50% Polyurethane (PU) 30% Leather Fibre 20% Polyester	137cm	L: 1.32 kgf/cm W: 1.20 kgf/cm	—	California 117, Section E Class 1	Wet - Class 4 Dry - Class 4
VINYL	PVC Upholstery	137cm	L: 30 kgf/9cm ² W: 26 kgf/9cm ²	—	—	—
PU	15% Polyurethane (PU) 40% PVC 45% Fabric Backing	137cm	L: 23.14N/ W: 34.23N (average value)	—	—	Wet - Class 4-5 Dry - Class 4-5
AIR MESH	100% Polyester Mesh	147cm	—	Wyzenbeek 30,000 rubs	California 117, Section E Class 1	Wet - Class 4 Dry - Class 4